

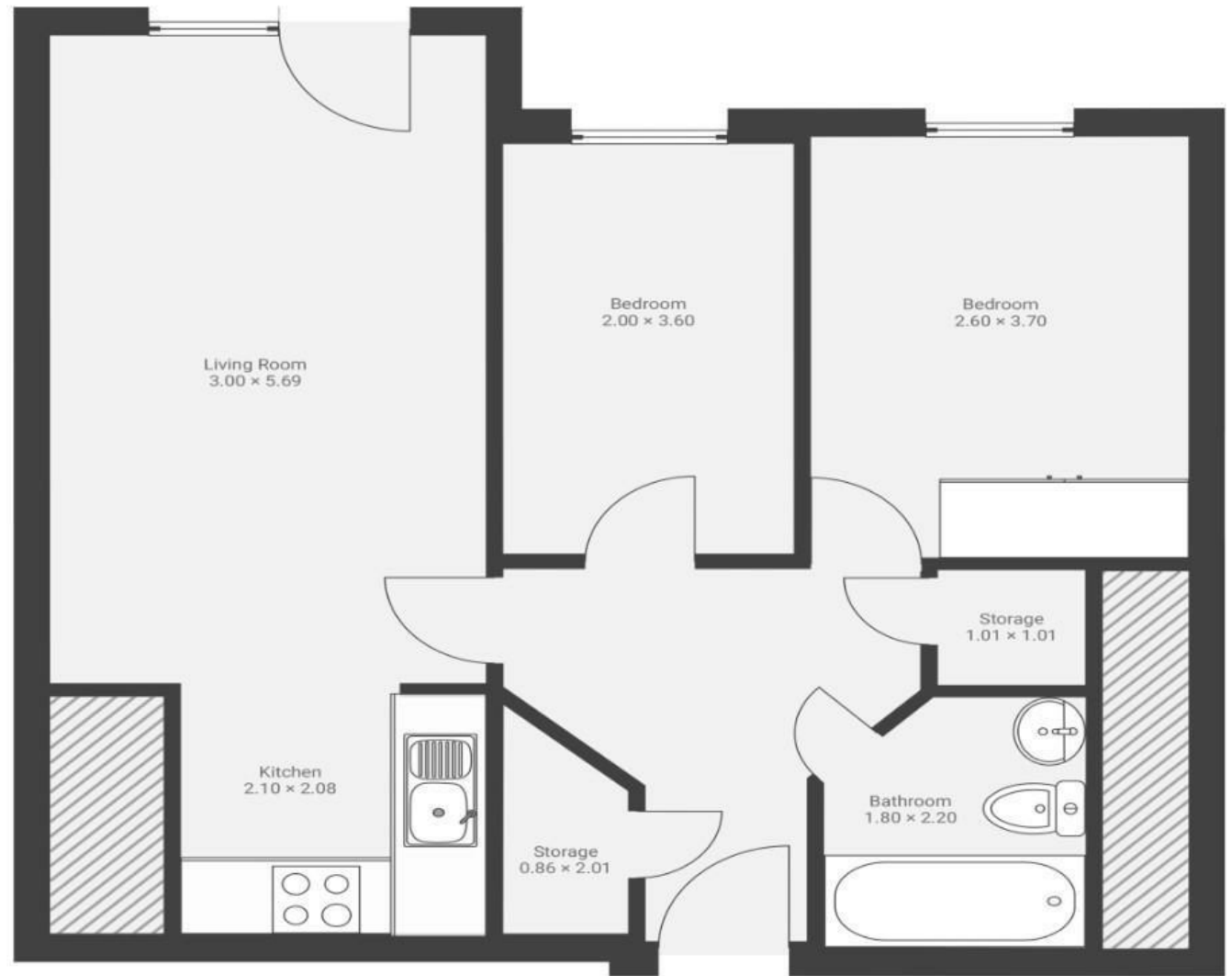
Squires Court

BEDMINSTER

APPROXIMATE FLOOR AREA
62.0 SQM / 667 SQFT



FIRST FLOOR



Illustrations are for reference purposes only, measurements are approximate, not to scale.

Boardwalk

Squires Court

BEDMINSTER, BRISTOL



£265,000



2 Bedrooms



BS3 4BZ



1 Bathrooms

"We bought our Bedminster flat as it offers a great balance of urban living with a creative edge, green spaces, and has a diverse and active community with a mix of young professionals, families, and creatives. The area has a strong sense of local identity, with regular community events and a growing number of independent businesses."

